

PART OF THE S.E. 1/4 OF SECTION 29, T.7N., R.1W., S.L.B. & M.

TAXING UNIT: 10

NORTH OGDEN
LOTS 35 TO 38, PLAT "B"
IN NORTH OGDEN CITY
SCALE 1" = 100'

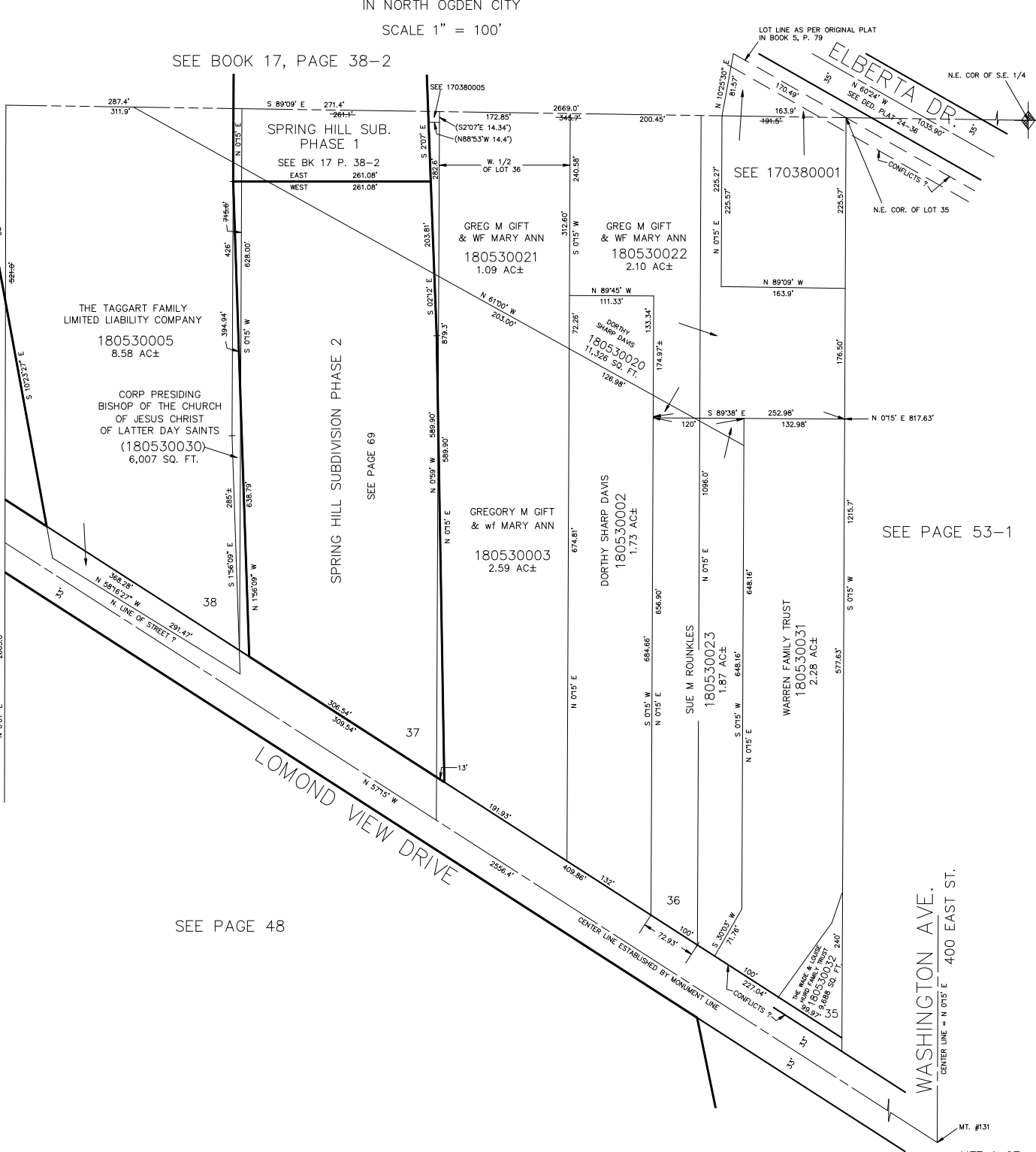
SEE BOOK 17, PAGE 38-2

LOT LINE AS PER ORIGINAL PLAT
IN BOOK 5, P. 79

ELBERTA DR.
N.E. COR. OF S.E. 1/4
N 80°24' W
SEE DEED PLAT 34-36
1035.90'

SEE BOOK 17, PAGE 50

SEE 17-050-0037



SEE PAGE 53-1

SEE PAGE 48

WASHINGTON AVE.
CENTER LINE = N 015° E 400 EAST ST.